

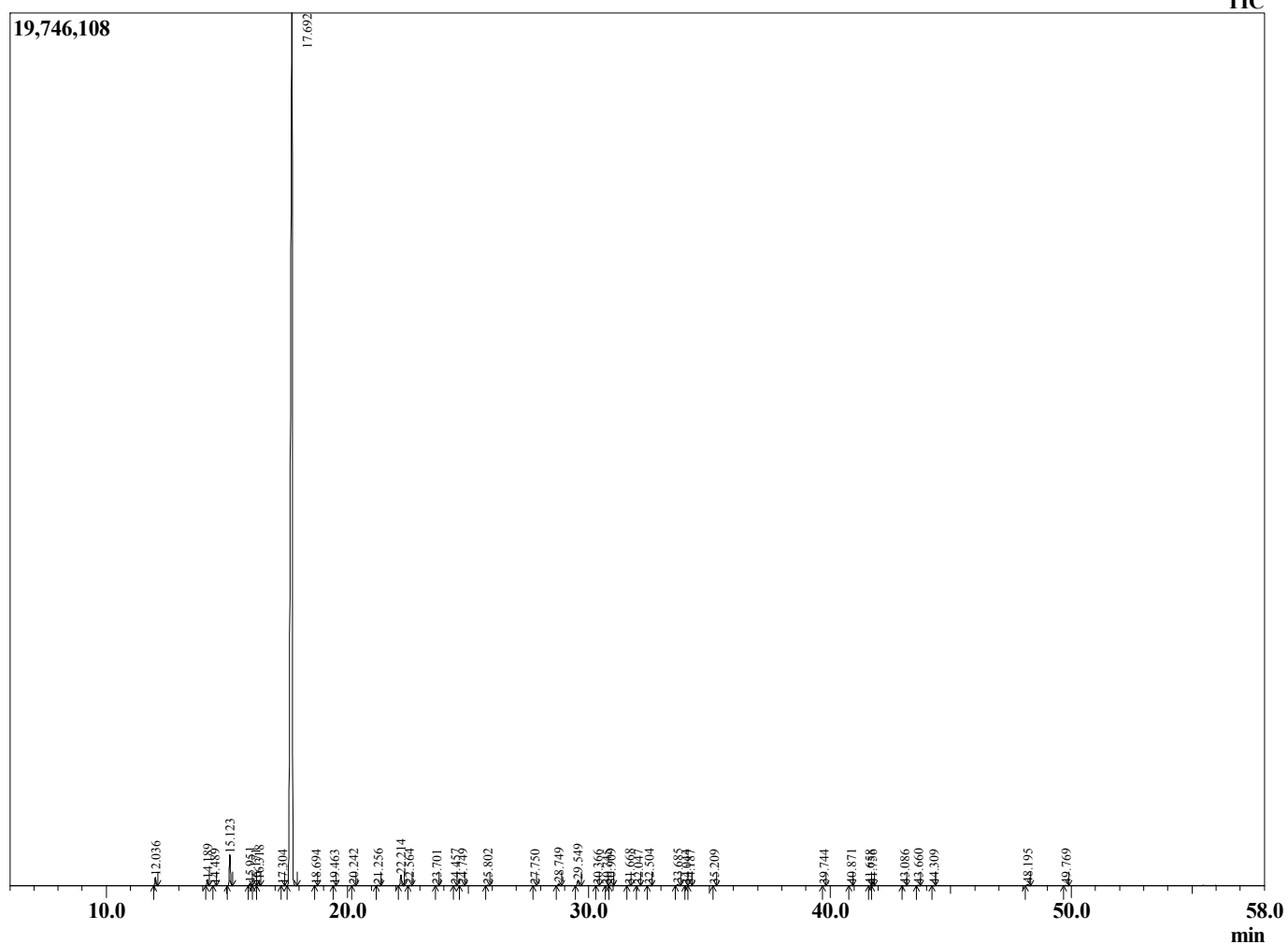
Sample Information

Analyzed : 4/18/2019 7:27:39 PM
 Sample Type : Essential Oil
 Sample Name : Citrus sinensis
 Injection Volume : 0.10

Orange Blood
 Lot# ITZ10-ZW
 Country: Italy



Chromatogram Citrus sinensis



R.Time	Name	Area%
12.036	alpha-Pinene	0.53
14.189	Sabinene	0.39
14.489	beta-Pinene	0.05
15.123	Myrcene	2.08
15.951	Octanal	0.18
16.171	alpha-Phellandrene	0.05
16.318	delta-3-Carene	0.35
17.304	para-Cymene	0.03
17.692	Limonene	93.59
18.694	trans-beta-Ocimene	0.02
19.463	gamma-Terpinene	0.03
20.242	n-Octanol	0.08
21.256	Terpinolene	0.06
22.214	Linalool	0.81
22.564	Nonanal	0.04
23.701	trans-para-Mentha-2,8-dienol	0.02
24.457	cis-Limonene oxide	0.04
24.749	trans-Limonene oxide	0.06
25.802	Citronellal	0.05
27.750	Terpinen-4-ol	0.02
28.749	alpha-Terpineol	0.18
29.549	Decanal	0.48
30.366	trans-Carveol	0.02
30.745	Nerol	0.02
30.909	Citronellol	0.09
31.668	Neral	0.06
32.047	Carvone	0.04
32.504	Geraniol	0.05
33.685	Geranial	0.12
34.044	n-Decanal	0.03
34.187	Perillaldehyde	0.03
35.209	Thymol	0.03
39.744	Neryl acetate	0.02
40.871	alpha-Copaene	0.04
41.658	beta-Cubebene	0.02
41.756	beta-Elemene	0.02
43.086	Dodecanal	0.03
43.660	beta-Caryophyllene	0.05
44.309	beta-Copaene	0.03
48.195	Valencene	0.12
49.769	delta-Cadinene	0.04
		100.00